

The Global Action Team

(simplified)

Lion Mark Ross
PDG Barbara Daily

OUR HISTORY



DISTRICT 21B – 2018 ONWARD

Enhancing our service, membership & leadership in Arizona

1. Global Action Team - Lions
2. LCI Forward – Goals

DISTRICT 21B – 2018 ONWARD

LCI Forward – outlines our strategic Goals for 2016-2020 to improve the lives of at least 200 million per year (by '20-21) through humanitarian service.



LCI FORWARD GOALS 2021

- **KEY GOAL: Increase our membership to 1.7 million!!**
-

More people to serve our communities and increase in our Service Impact - 200 million people served per year

More Lions leaders – 500,000 Lions, Leos trained

Increase LCIF donations – \$50 million



GLOBAL SERVICE FRAMEWORK

1. Vision
2. Environment
3. Hunger
4. Diabetes
5. Pediatric Cancer

DISTRICT 21B – 2018 ONWARD

Global Action Team - was built with a vision that one day every need in the world will be served by a Lion or Leo.

DISTRICT 21B – 2018 ONWARD

Global Action Team:

- Leadership
- Membership
- Service

WHO HOLDS LCIT TOGETHER?

CLUBS!!

MEMBERS!!

WHAT HOLDS US TOGETHER?





The glue that holds
a team together
is unity of
PURPOSE.

- JOHN C. MAXWELL -

JOHN MAXWELL
Team.COM

DISTRICT 21B – 2018 ONWARD

Global Action Team:

- Leadership
- Membership
- Service

How does this fit into our existing club structure?

CLUB BOARD OF DIRECTORS

OLD STRUCTURE: 7

Club President

Vice Presidents

Secretary

Treasurer

Membership Chair

LCIF Coordinator

Directors



NEW STRUCTURE: 9

Club President - GAT Chair

Ist Vice President - GLT

Secretary

Treasurer

Membership Chair - GMT

Service chairperson - GST

Marketing Communications

IPP - LCIF Coordinator

Directors

GAT CHAIR – CLUB PRESIDENT

- Election of qualified members
- Support member retention
- Chair meetings
- Collaborates with clubs etc
- A member of the DG advisory committee
- Identify and share successes and challenges

GLT – 1ST VICE PRESIDENT

- Act as president when president is absent
- Oversee committees
- Foster collaboration among the GAT members
- Supports member retention
- Ensures new members are provided an effective member orientation
- Identifies potential leaders and encourages them to participate in leadership development
- Participates in region, zone and district meetings and events.

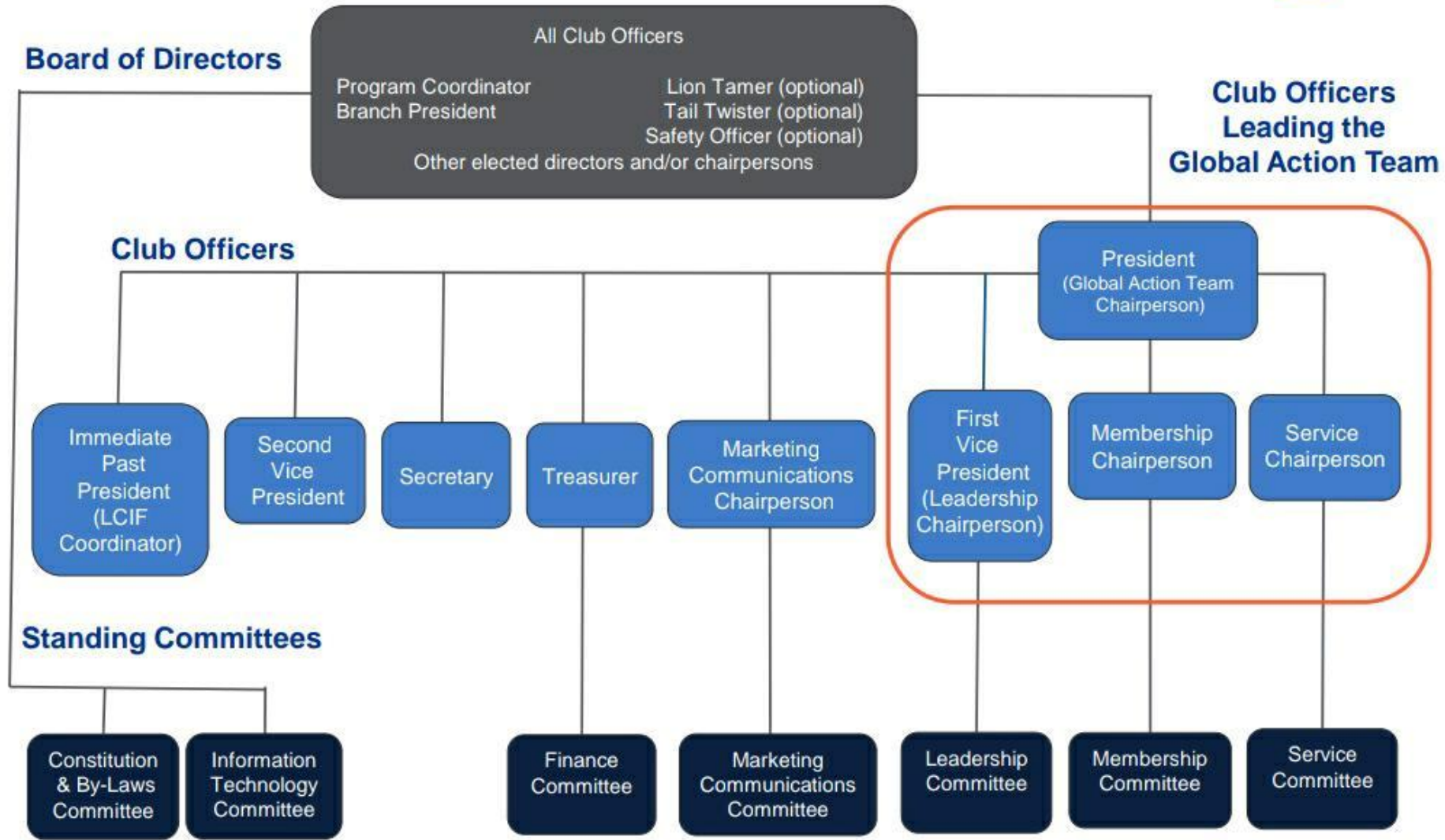
GMT – MEMBERSHIP CHAIR

- Create a plan for club membership growth, membership satisfaction
- Understand the different LCI membership types and programs
- Collaborates with your GLT and GST club chairpersons and the club GAT chairperson
- Supports member retention
- Develops and leads a membership committee
- Motivates club members to invite new members
- Ensures new members are provided with an effective new member orientation
- Collaborates with the club service chairperson to promote membership opportunities

GST – SERVICE CHAIR

- Develops and leads a service committee to create and implement service goals and action plans
- Increases member satisfaction in club service project events and fundraising efforts
- Implements projects aligned with the LCI Forward Service Framework
- Ensures all service projects are submitted through MyLCI
- Collaborates with club marketing and PR leads to raise community awareness
- Increases Lion and Leo engagement in service projects
- Increases LCIF coordinator collaboration at club level

Model Club Structure



CHANGE YOUR WORDS— CHANGE YOUR MINDSET

I don't understand

What am I missing?

I give up.

I'LL USE SOME OF THE STRATEGIES I'VE LEARNED.

I made a mistake.

Mistakes help me improve.

This is too hard.

THIS MAY TAKE SOME TIME AND EFFORT.

It's good enough.

IS THIS REALLY MY BEST WORK?

I'll never be as smart as her.

I'm going to figure out what she does and try it.

I can't make this any better.

I can always improve; I'll keep trying!

I can't read

I'm going to train my brain in reading

I'm not good at this.

I'm on the right track.

SO ... DO YOU HAVE ANY
QUESTIONS FOR ME?

