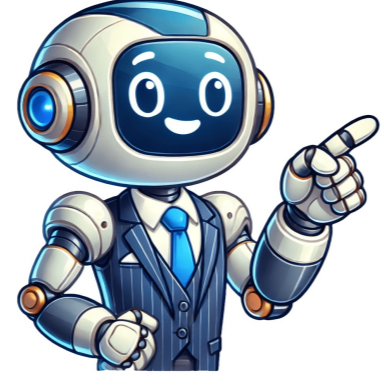


Click to prove
you're human



reported on these changes in November 1990 and March 1993. Washington Post articles from March 27, 1993, and April 2, 1997, highlighted criticisms of the test. College Board publications explained the difference between SAT and PSAT. A controversy surrounding SAT exam reuse was reported by Washington Post in 2016. Reuters articles from March 28, 2016, discussed security breaches and leaks affecting the test. A Los Angeles Times article from August 28, 2018, revealed that answers to the SAT may have been leaked online, further complicating student experiences. Research published in *Personality and Individual Differences* in 2011 explored the relationship between SAT scores and GPA. In a *New Yorker* article from December 17, 2001, Malcolm Gladwell discussed Stanley H. Kaplan's impact on understanding the SAT. Stephen Jay Gould's book *The Mismeasure of Man*, released in 1996, critically examined the test's history and significance. The Scholastic Aptitude Test (SAT) is a standardized test used for college admissions in the United States. It was first introduced in 1900 and has undergone several changes over the years. The test consists of two main sections: Reading and Writing, and Math, each with its own set of questions and time limits. The test is adaptive, meaning that it adjusts to the student's performance based on their answers. This allows for a more accurate measurement of knowledge and skills. However, this also means that students may face different question levels in subsequent sections. The SAT does not include an essay section, but some states require its inclusion as part of SAT School Day administrations. Students can check with their school to see if the essay will be included. Test takers need to plan ahead, taking into account travel time and any special accommodations they may need due to medical conditions or other circumstances. The test starts at 8:30 a.m., and students can use a testing timer in Bluebook to keep track of time remaining for each section. The total duration of the digital SAT is 2 hours and 14 minutes, not including breaks. Don't get caught off guard on test day - familiarize yourself with what to expect. Bring your fully charged device loaded with the Bluebook app, a valid ID, and a writing instrument for scratch work. Refer to our test day checklist for a comprehensive list of essentials. The proctor will keep electronic devices locked during the exam. With this knowledge, you'll be well-prepared and can focus on acing the SAT.