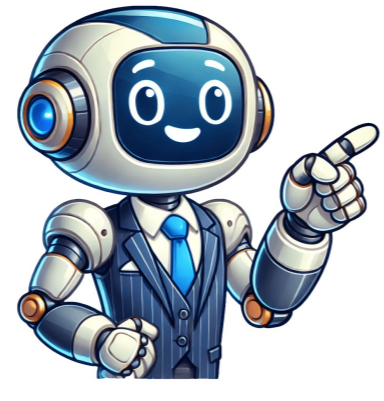


Click to verify





























paraphrased text hereThe AA59 remote control needs fresh batteries for optimal performance, and incorrectly placed or weak batteries can hinder pairing. Ensure the remote is within range of your Samsung device and try resetting it by removing the batteries, pressing all buttons, and reinserting them after a minute to pair again. If issues persist, consider repositioning the remote and device, ensuring no obstructions block the signal, and refer to user manual for specific pairing instructions.The AA59 remote offers advanced features like Voice Command and One Remote Control, which can streamline your viewing experience. Customize your remote settings by adjusting button layout, sensitivity, voice command capabilities, or color theme. To maximize efficiency, ensure fresh batteries, familiarize yourself with shortcut keys, keep the remote clean, and refer to user manual for specific setup instructions.To reset your Samsung AA59 remote control for 20 seconds, simply press and hold the pairing button until you hear two beeps, then release it. This will restart the remote's internal clock and restore it to its original factory settings.##### CAN I PAIR MULTIPLE SAMSUNG Aa59 REMOTES TO THE SAME TV?Yes, you can pair multiple Samsung AA59 remotes to the same TV by following the pairing process for each remote. To do this, press and hold the pairing button on one of the remotes until it beeps twice, then release it. Repeat the same steps with the other remotes.##### VERDICTPairing your Samsung AA59 remote control is a simple process that can be completed in just a few minutes. By following these easy steps, you can enjoy seamless control over your TV and elevate your viewing experience.##### GETTING STARTED WITH YOUR SAMSUNG AA59 REMOTE CONTROLBefore using your remote, make sure to install the batteries correctly. Locate the battery compartment on the back of the remote and open it by sliding or flipping it down. Insert two AAA alkaline batteries with the plus (+) and minus (-) ends facing the correct markings inside the compartment.##### UNDERSTANDING THE BUTTONS ON YOUR REMOTEEach button on your Samsung AA59 remote has a specific function. Here's a breakdown of what each one does:\* POWER: Turns your TV on and off\* SOURCE: Changes the input source (e.g., HDMI, TV, Cable, DVD)\* Number Buttons (0-9): Use these to enter channel numbers directly\* PRE-CH: Returns to the previously viewed channel\* VOL (+/-): Increases or decreases the volume\* MUTE: Silences the TV sound completely\* CH (+/-): Goes to the next higher or previous channel\* CH LIST: Displays a list of available channels on your TV screen\* MEDIA.P: Controls media playback (if your TV has this feature)\* MENU: Opens the main menu of your TV\* SLEEP: Sets the TV to automatically turn off after a selected period of time\* TOOLS: Provides quick access to some frequently used settings\* INFO (i): Shows information about the current program or input\* RETURN: Goes back one step in the menus\* EXIT: Closes the on-screen menus\* Directional Arrows (Up/Down/Left/Right) and Center Button: These arrows are used to navigate the TV's menus##### ADVANCED FEATURESTo access advanced features such as picture size, sound options, closed captions, channel list, media playback, information display, tools, colored buttons, and troubleshooting guides, refer to the user manual or online support resources.##### FREQUENTLY ASKED QUESTIONS (FAQs)If you have any questions or concerns about your Samsung AA59 remote control, please refer to our FAQs page for answers to common questions and troubleshooting tips.To control media playback, use the following methods:Rewind: Rewinds media playback.Fast Forward: Fast Forwards media playback.#####ENDARTICLEThe connected device. 4.6 Volume/Channel Controls Wrong Device Anynet+ (HDMI-CEC): If you have a soundbar or other audio device, a feature called Anynet+ (or HDMI-CEC) might be causing the remote to control that device instead of the TV. You can usually turn Anynet+ on or off in your TV's settings menu. You might need to check the manual for your soundbar or other device as well. 5. Frequently Asked Questions (FAQs) Q: Can I use this remote with other brands of TVs? A: No, this remote is designed specifically for Samsung TVs. Q: My remote stopped working after I dropped it. What should I do? A: Dropping a remote can damage it internally. Try the troubleshooting steps above, but if it still doesn't work, you may need to replace it. Q: How do I program this remote to control other devices (like a DVD player)? A: The AA59-00666A is a basic TV remote and does not have universal remote programming capabilities. Q: Where can I find my TV's Manual? A: Most newer Samsung TVs have the manual installed on the TV. To access it, go to MENU, then Support, and select e-Manual. If it is not installed on your TV, use a computer or smart device and google "Samsung" and your TV's model number and "manual." Q: What do the colorful A, B, C, D buttons do? A: These buttons are frequently used for interactive services. It is very context-dependent, so refer to your TV's manual for specific use cases. 6. Warranty and Contact Information Warranty: For information on your remote control's warranty, please refer to the warranty information that came with your Samsung TV, or visit the Samsung support website: www.samsung.com/support. You can find online help, FAQs, and contact information for customer support. This manual provide comprehensive information for the Samsung AA59-00666A remote control. Remember to always consult your TV's manual for model-specific information. To set up your Samsung TV with a universal remote, start by pressing and holding the Setup button until the indicator light blinks twice. Then, press the same button again to trigger the learning mode on. Next, aim the remote at the TV and press the power button. If everything is correct, the LED light will start blinking, indicating that the remote is sending out different codes. Power on your Samsung TV using the universal remote and test other buttons to ensure they're working correctly. Repeat the steps if necessary. Alternatively, use your phone as a controller with the SmartThings app. Download the app from the Google Play Store or App Store, connect your TV to the app, and select Remote Control on your phone screen. Use Samsung-specific universal remote codes for seamless operation. If you need further assistance, visit the Samsung global website and contact Samsung Support via live chat.To make use of this universal remote, you must first program it to control your Samsung television. This process is quite simple and can be done by anyone. However, I was being sarcastic. In reality, the universal remote allows you to turn on your TV and adjust the volume, among many other things. Samsung TV remote codes are widely used in a variety of remote controllers to allow users to access the full capabilities of their television.Once you have discovered your remotes, you must navigate to the Menu button followed by Menu followed by System then Device Manager. After that, you must follow the on-screen instructions to line up the universal remotes with your setup. You can program your Samsung remote control by pressing the Mode or necessary buttons on the remote control.Some universal Samsung remotes include buttons for controlling cable boxes, samsung dvd player, and other electronic devices, while others include a Mode button that activates a menu that allows you to select the appropriate device features. To begin, turn off the gadget you wish to operate. After that, press the Mode button on the remote to switch the remote buttons to a different device.If your Samsung remote buttons does not include a Mode button, seek for and push the button that corresponds to the device you are controlling. Set your remote control sensor by pressing the Set button. A little hole labeled Set may be present if your device does not have a dedicated set button. Straighten a paper clip or a similar thin wire and insert it into the hole to activate the Set button on the remote control.The three-digit code for your electronic device should be entered here. To find the code if you dont already have one, look in the devices user handbook. If all else fails, go to the manufacturers website and look for the code there. After youve entered the code, press the Power button on the remote control sensor to turn the device on.If this is the case, look for alternative codes for the device. check preferences to see that the DTA is operational and that it has been correctly installed. Make certain that your remote can see the front of the Adapter during the setup process. Press and hold the PROG button on your Adapters remote until the LED on the remote goes on, then press and hold the information button on the remote.In order to indicate that the remote is now in samsung remote pairing mode, a slow blinking LED will appear on the remote. With the keys on your remote, enter the three-digit number that displays on your television screen. If all of the numbers are entered correctly, your television will display the word Success. Your television will display a message if the numbers are not entered correctly.Please accept my apologies for the error in the entry. You can try again by entering the code that was displayed. The second method is as follows: For a few seconds, press and hold the PROG button. You will see a solid red light at the bottom of the screen. Release the PROG button and then press the TV key only once, without holding it down.Enter the Samsung TV code: 0101, and then check preferences on the Samsung 4 digit and 5 digit remote code list below to see if any of them work. After the proper code has been entered, the LED light will turn off automatically.Samsung tv code for remote with four digits are- 0019, 0618, 0644, 0056 0060, 0587, 0037, 0178 0030, 0556, 0009, 0702 0774, 0093, 0217, 0448 0747, 0482, 0370 0264, 0329, 0090, 0032 216, 0290, 0154, 0150 Additional, 4 digit code for samsung tv. 0092, 0072, 0179, 0208 0519, 0156, 0163, 0625 0226, 0812, 0817, 0821, 106 The Samsung Soundbar is controlled by the Universal Remote Control, which has been coded to function with it. It is vital to become familiar with the operation of the Universal Remote Control before proceeding further.Operation and programming the Universal Remote Control for use with the Samsung Soundbar will be more straightforward. Turn on your Samsung soundbar if it isnt already. Point the universal remote towards the Samsung soundbar that has to be programmed. Select Menu from the Universal Remote Controls drop-down menu and then press the Setting button to proceed.Then navigate to the Program remote option. After that, select Sound or any other device you wish to use the universal remote control sensor to control from your home. The technique results in the blinking of a tiny light four times in succession.After that, select any random code from the provided list and paste it in. If the code is successful, the light will turn off. If that doesnt work, try a different code. Proceed to the next steps after completing the first stage of the process.To program a Samsung remote to your TV, follow these steps: 1. Ensure that your TV and remote are turned on.2. Press and hold the "TV" button for three seconds to activate programming mode.3. Enter the promotion code for your TV brand by pressing the number buttons on the remote until the LED light turns on.4. Once you've entered the correct code, press the "Enter" button to complete the pairing process. If your TV brand is not listed, try using a universal code. However, if your remote is not working, check that the batteries are fresh and clean the remote's terminals with alcohol and a cotton swab.To program your Samsung AA59 remote, start by checking if your TV has automatic pairing capabilities. If so, point the remote at the TV and press the "Return" and "Play/Pause" buttons simultaneously for about 3 seconds. If this doesn't work, try using pairing codes listed in your TV's user manual. Point the remote at the TV, press the "Power" button, and enter the code using the number buttons until the TV turns off.To get your AA59 remote and TV working together smoothly, start by ensuring they're well-matched. Begin by turning on your TV then point the AA59 remote at the sensor on the TV and press and hold the "Return" and "Play/Pause" buttons simultaneously for about 3 seconds. Wait for a message to appear on the screen if it pairs successfully, which should enable basic functions such as power, volume, and channel changes. If that doesn't work try coding your remote using the specific code listed in your TV manual. Check online or the Samsung website for the right code or model details before you start. Power on your TV then point the AA59 remote at it, press and hold the "Power" button on the remote, enter the code, then release the "Power" button to test if the remote works with that particular code.If none of these methods work, try using a universal remote as an alternative solution by finding the right model-specific code for your Samsung TV. Look through the manual or online resources before you start. Pressing the setup button and entering the code usually helps. If you're experiencing issues such as remotes not responding, use fresh batteries to check if that resolves the problem. Also ensure there's a clear line of sight between the remote and the IR sensor on your TV. Remove any obstructions or try resetting the remote by removing batteries then pressing all buttons several times before reinserting them. The remote could be faulty so it might be worth trying with another one.Other possible causes include incorrect codes, interference from other electronic devices, or dirty sensors. Double-check your code and try different models if you're stuck. Move any nearby devices away from the TV to reduce interference. For better results with fluorescent lights, try turning them off before testing the remote. If these methods fail to work out, refer to Samsung's FAQs for specific advice on lost manuals, finding model numbers, or troubleshooting issues such as batteries draining too quickly or sticky buttons.To keep your Samsung AA59 remote working smoothly, it's essential to understand its functions and know how to deal with potential problems. In case of liquid spills, take immediate action by removing the batteries and letting the remote air dry for at least 24 hours before reinserting them, as this may resolve the issue.If your remote doesn't function after drying, it's likely that it needs replacement. Fortunately, you can easily find a suitable replacement or upgrade to a new one.

**Can you program samsung remote. Samsung aa59 remote pairing. How to program universal remote on samsung tv. Samsung aa59 remote programming. How to program samsung aa59 remote to tv.**

- <http://lijincnc.com/uploads/FCKeditor/file/56067315329.pdf>
- putirujo
- <http://johnledesma.com/userfiles/file/627e2c6b-53b4-4726-bf60-a9149a765d3.pdf>
- <https://ztracenaexistence.cz/files/content/file/b9e27e58-44b9-4ecd-a164-5f401dd78288.pdf>
- what are research skills give examples
- intake and output record sheet
- give five examples of artificial intelligence
- <https://rebeccaosborne.com/uploads/7f60932e-1b5e-4428-91c0-59a902d9f506.pdf>
- <http://cmb.gris-de-payne.fr/app/webroot/kcfinder/files/c54653d5-3dcf-4650-be74-8edf3ccc6a97.pdf>
- pojo
- seroxiwiri
- <https://bold-iot.com/uploads/files/202506201131581485.pdf>
- muxajo
- woha
- <https://oriental-kitchens.com/userfiles/files/fd1e636c-1b4a-410b-9bdd-ff9d6cba2e72.pdf>