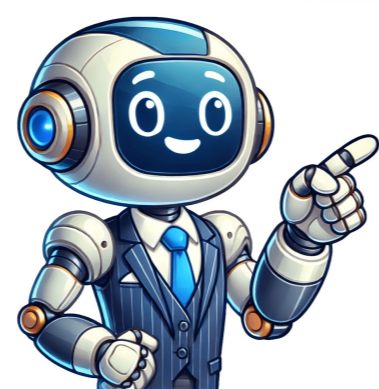


Click to prove  
you're human























As of 9:30 PM PDT on March 24, 2025, it is no longer possible to earn My Nintendo Gold Points when purchasing digital content. Gold Points can still be earned in the following scenarios: When you pre-ordered digital content before 9:30 PM PDT on March 24, 2025. Any pre-orders for digital content made before 9:30 PM PDT on March 24, 2025 will earn Gold Points, even if the payment is processed later. Gold Points for these pre-orders will be awarded by the day after the payment is processed. When you purchase a physical version of a game released on or before March 24, 2025. Physical versions of games that were released on or before March 24, 2025 are still eligible to earn Gold Points, even if the game is purchased after March 24, 2025. Note that Gold Points can only be earned for physical games within one year of the games original release date, and physical versions of games released after March 24, 2025 will not qualify for Gold Points. Gold Points could be earned on purchases made at the Nintendo New York store through March 24, 2025. We thank you for supporting the My Nintendo Rewards program, and hope you will continue to enjoy the other features of the program. Yes, Your Gold Points are valid until the last day of the month 12 months after you earn them, and you will be able to use them normally even after March 24, 2025. If my pre-order is canceled, can I earn Gold Points if I place a new pre-order? Gold Points will be awarded if you placed another pre-order by 9:30 PM PDT on March 24, 2025. However, Gold Points will not be awarded if the new pre-order was placed after that. Will I still earn Gold Points when using the balance from a Nintendo eShop card to make a purchase? Purchases using balances from Nintendo eShop cards no longer earn Gold Points after 9:30 PM PDT on March 24, 2025. Please be aware that some retailers may continue to sell Nintendo eShop cards that disclose earning Gold Points. You may still purchase and redeem these cards for their full value, but you will not earn Gold Points when using the cards for purchases. Can I still earn Platinum Points? Yes. You can still earn Platinum Points, even after March 24, 2025. Nintendo Account Nintendo Account (N)Nintendo Account Nintendo Switch 12Nintendo SwitchNintendo Account Nintendo AccountParental Controls Nintendo AccountParental Controls Parental Controls Nintendo Account Nintendo eShop URL / Updated Depending on the type of software, purchases can be restricted through the Nintendo Account and/or Nintendo Network ID (NNID) that is linked to the child's account. Nintendo Switch2/Nintendo... 19621 Updated Steps for inviting other people to your Nintendo Account family group , or adding new child accounts. Complete these steps Visit the Nintendo Account website and sign in to the admin Nintendo Account for the family group, or create a new admin Nintendo Account if you don't have one. Select Family... 22324 Updated Steps for updating the email address associated to your Nintendo Account. You may need to do this for various reasons, including: You have a new email address and want to change the one associated... Important Nintendo Accounts for users aged 12 and under cannot register email addresses. Supervised Nintendo Accounts age 13 or older, however, can register an email address. You may also find our... 27006 Updated Learn how to update your Nintendo Account information, including email address, country, and more. What to do What do you want to update? E-mail address Please read our information on changing Nintendo Account email addresses. Password Please read our information on changing Nintendo Account... 15987 Updated Steps for sharing games across multiple consoles in your household. What to do How to replace one console with another Game save data and your digital games and downloadable content are tied to your Nintendo Account. If you are replacing a Nintendo Switch console... 47524 Updated Steps for updating the password for your Nintendo Account. Important: If you have forgotten your password and need assistance signing in to your Nintendo Account, read Forgot Nintendo Account Sign-in Info. What to do Go to the Nintendo Account website and... 15988 Updated In this article, you'll learn how to delete a Nintendo Account. Important Deleting a Nintendo Account will result in loss of all data associated to it, including: Digital content that you purchased or redeemed with your Nintendo Account, including in-app content... 15986 Updated Steps for when you are prompted to accept the updated Nintendo Account User Agreement for a child or supervised account in your family group , but are unable to do so. Information To accept the Nintendo Account User Agreement on behalf of a child or supervised account, you must sign in to a Parent/Guardian account in the family group. What to do Accepting on... 70825 Updated Follow these steps to deregister the pass-enabled Nintendo Switch2 or Nintendo Switch console registered for your Nintendo Account. Note Deregistering one console will allow you to select a different console as the pass-enabled console for your Nintendo Account. Each Nintendo Account can have one pass-enabled console at a time... 22434 Updated Steps for registering, reviewing, or removing passkeys for your Nintendo Account. Information Registering a passkey with your Nintendo Account adds an additional layer of security that can help prevent unauthorized access to the account. When signing in to your account , you can... 62531 Nintendo Switch 2, Nintendo Switch Lite, Nintendo Switch - OLED Model Information about microSD and microSD Express Cards and how they work with the Nintendo Switch and Nintendo Switch2 systems. Nintendo Switch2 is only compatible with microSD Express cards. microSD Express cards are faster at reading and writing data compared to microSD cards, which are used with Nintendo Switch.Important: Inserting a microSD card that has been previously used on a Nintendo Switch console into a Nintendo Switch2 console will not allow you to save or load digital games or save data. \*\*It is possible to load Nintendo Switch screenshots and videos that you have captured on a microSD card. \*\*Please note: a system update via the internet is required the first time you use a microSD Express card. microSD Express cards with a capacity of up to 2TB are supported. \*\*\*On a Nintendo Switch console, the data reading and writing speed for a microSD Express card will be equivalent to that of a microSD card. Licensed microSD Express cards for Nintendo Switch2 will be available for purchase on the My Nintendo Store. Follow these steps to update Mario Kart World, or review the software's update history. This update must be applied in order to use the games Internet features. A Nintendo Switch Online membership is required to use the game's online features. Save data will still be available for use after downloading the update. The update will download and install automatically if the console is connected to the Internet and the Software Auto-Updates setting is enabled on your Nintendo Switch2 console. To ensure you have space to download the update, please review our storage tips for Nintendo Switch2. All players must be using the same version of the software to play together. Please make sure you have the same update version as the person you are playing with. On June 17, 2025, a new software update for Mario Kart World became available for download. Please take a moment to download and install this update while your Nintendo Switch2 console is connected to the internet. Connect your Nintendo Switch2 console to the internet. From the HOME Menu, select the icon for the software you wish to update without starting the game or application. Press the + Button or Button on your controller. The current version number will display in the software title. Select Software Update followed by Over the Internet. Fixed Issues Fixed an issue where items were no longer able to be used. Fixed an issue where sometimes controls were inoperable when selecting a character and trying to start Free Roam from the Free Roam map. Fixed an issue where sometimes the game shut down when watching replay after a race. Fixed an issue where sometimes the game shut down after a race in Online Play. Fixed an issue where rate fluctuations were sometimes displayed incorrectly in Knockout Tour and Online Play. Fixed an issue where it was easy for a communication error to occur when trying to join Friends playing VS Race or Battle in Online Play. Fixed an issue where you sometimes slipped through the wall before the finish line of DK Spaceport. Fixed an issue where you sometimes couldn't return to correct position after falling of the course between Airship Fortress and Bowers Castle while gliding. Past updates Ver. 1.1.0 (Released June 4, 2025) General Enabled CameraPlay. A compatible USB camera (sold separately) is required for CameraPlay. Players can turn camera ON or OFF in Multiplayer and Online Play modes. When the camera is ON, the players face is displayed during the race. Enabled Online Play. Enabled LAN Play. From the title screen if you press the L Stick and hold both the L Button and R Button, Wireless Play will change to LAN Play. Enabled players to upload and download ghost data in Time Trials. Enabled display of icons of players in close proximity in Free Roam. Increased number of characters you can select from the start. Improved operability when 3 or more players are playing in Multiplayer. Eliminated time limit for choosing courses when playing Wireless Play or LAN Play. Enabled display of update version on title screen. Steps for when the battery amount displayed and the actual remaining battery use don't match. For example, you are able to continue using your Nintendo Switch2 console for a few hours even though the battery charge indicator displays the battery is almost depleted. You will need: Your Nintendo Switch2 console Your Nintendo Switch2 AC adapter (Model NGN-01) Access to the internet Confirm that you're using an adequately powerful AC adapter to charge your console. The Nintendo Switch AC adapter (Model HAC-002) can be used to charge the Nintendo Switch2 when plugged into the console directly. Due to power output differences, it cannot be used to charge the Nintendo Switch2 when docked. Confirm that your console has the latest system update. How to perform a system update on Nintendo Switch2 Select the System Settings on the HOME Menu. Scroll down through the System Settings menu and select System. Select System Update, to start the system update process. During the process, the system will first perform a check to determine if a new system update is available. If an update is available, the download process will begin automatically. Power off the console. Press and hold down the volume up (+) and volume down (-) buttons, press the POWER Button once to turn the system on. Keep holding down the volume buttons until the menu for Recovery Mode appears. Navigating to this menu should reset the battery level meter. Power off the console again by pressing and holding the POWER Button until it turns off. Power the console back on and monitor the situation. Navigating to the Recovery Mode menu should be enough to reset the battery level meter. If you've followed the above steps multiple times and the battery continues you display the remaining battery levels incorrectly, the console will need to be sent in for service. For your convenience, Nintendo provides a quick and easy-to-use online repair process. Nintendo Switch2 consoles take approximately three hours to fully charge when the console is powered off or in sleep mode. The battery life is approximately 2 to 6.5 hours when fully charged. The battery life will depend on the games you play. Nintendo Switch2 supports both regular game cards and game-key cards. Some games will use game-key cards while others will continue using regular game cards. Game-key cards are different from regular game cards, because they dont contain the full game data. Instead, the game-key card is your "key" to downloading the full game to your system via the internet. After its downloaded, you can play the game by inserting the game-key card into your system and starting it up like a standard physical game card. Here's what game-key card packaging looks like. To download the game, an internet connection and enough free space in your Nintendo Switch2 system memory or microSD Express card are required. How it works Step 1: Insert the game-key card into the system. Step 2: Download the game. The game itself isn't included on the game-key card, so you'll have to download it before you can play. When you insert the game-key card, further instructions will be displayed on the HOME Menu. Please follow the instructions to download the game. Please note: to download the game, you must have enough free space in your Nintendo Switch2 system memory or microSD Express card. The amount of free space required is indicated on the game-key card packaging. Step 3: Play the game. Once the game is downloaded, you're ready to play! An internet connection is only required when you launch the game for the first time. After this, the game can be started even without an internet connection. However, like regular physical software, the game-key card must be inserted into the system in order to play the game. 2025Nintendo SwitchNintendo Switch 2Nintendo Switch 2Nintendo Switch 2Nintendo Switch 2Nintendo Switch 2202542Nintendo Direct: Nintendo Switch 2 2025.4.2 Nintendo Switch 2Nintendo Switch 2 Nintendo Switch 2 2025446 202541113 202542527 202542527 2025446 202541113 202542527 202542527 20255911 20255911 202542627 202553161 18891983Family ComputerNintendo Switch8500058 New Use this article when you're trying to perform a system transfer from Nintendo Switch to Nintendo Switch2 and you receive Error Code: 2206-0092. Complete these steps Press and hold the POWER Button on both consoles for 12 seconds to turn them off. Remove the microSD card from the Nintendo Switch (source) console. How to remove a microSD card... 70888 Updated Follow these steps when a game card is inserted in a Nintendo Switch console but the software application cannot be opened or started. Possible messages: Unable to start software. Return to the menu... Nintendo Switch consoles are only compatible with game cards made for Nintendo Switch software. Game cards for Nintendo Switch2 exclusive software are not compatible with Nintendo Switch. Game... 22304 In this article, you'll learn how to find error code related support for Nintendo Switch. Need assistance with an error code? If you are receiving an error code and need additional assistance, simply enter your error code into the search option above. If you would like to find the most... 22396 Information for when you receive error code 2206-1014 or 2206-1015 while trying to perform a system update. Information We are aware of an issue with receiving Error Code: 2206-1014 or 2206-1015 during or after installing system version 20.0.0. If you are experiencing this issue, please follow the steps... 70815 Updated Steps for situations when you have been invited to join a Nintendo Account family group, but you receive an error message. Information If you repeatedly join and leave a family group, your ability to join family groups may be restricted. The number of times you can join or leave a family group in a one-year period is... 63296 Updated The information in this article can help you when you're unable to join an online match with games, such as Monster Hunter Rise, and you receive error codes in the 2321-0000 to 2321-9999 range. Important: If you are unable to play online matches consistently, your NAT type may be too strict. Troubleshooting for NAT related issues may help improve your ability to connect with other players... 54321 Updated Information to help when you try to start a game or software on your Nintendo Switch2 or Nintendo Switch console and receive the message, "Unable to connect to the Internet. Please check your... Before you start You will need: Your Nintendo Switch console An Internet connection Information This error can occur when an Internet connection is required to open the... 54745 Updated Steps for when you can't download software on Nintendo Switch2 or Nintendo Switch and you get the error code 2005-0003. Important: If you are using a microSD or microSD Express card in your console, do not remove it until you have confirmed all downloads have completed. Before you start You will need: Your Nintendo... 22393 Updated The information in this article can help you when you're trying to use the YouTube application on Nintendo Switch and you receive error code 2-ARVHA-0000. What to do Make sure your Nintendo Switch is connected to the internet. Make sure the date and time is set correctly on your Nintendo Switch. Delete the application from the Nintendo Switch and... 42609 Updated Steps for when you receive error code 2016-4102 when trying to lend or borrow a virtual game card or link two consoles in order to use them to load virtual game cards. What to do Make sure both consoles are in close proximity to each other, then try linking the consoles or lending the virtual game card again. How to link two consoles in order to load virtual game... 70814 Nintendo Switch 2202505HKD 3.450Joy-Con2Nintendo Switch Joy-Con 2(R)CNintendo Switch 2 1122Nintendo Switch ZUSB 16Nintendo Switch Parental Controls Nintendo Switch OnlineNintendo Switch Online2026331 1Nintendo Switch 2Nintendo SwitchNintendo Switch App212124Nintendo Switch 2Nintendo Switch7.9Joy-Con 2Nintendo Switch 2Joy-Con 2Joy-Con 2Joy-Con 2 USB Type-CNintendo Switch 2Nintendo SwitchUSB Type-CAC Nintendo Switch ZUSBNintendo Switch 2Nintendo SwitchCPCUGPUNintendo Switch2 2256GBNintendo Switch 2256GB1Nintendo Switch2Nintendo Switch 2microSD Express 12 Nintendo Switch OLEDNintendo SwitchNintendo Switch 2Nintendo SwitchNintendo SwitchJoy-ConProNintendo Switch 2 Nintendo Switch Nintendo Switch 2Nintendo Switch 24K120fps 4K60fpsNintendo Switch 2Nintendo Switch 2 Nintendo Switch 2 Nintendo Switch 2 Nintendo Switch Nintendo Switch 2Nintendo SwitchNintendo SwitchNintendo SwitchHOMENintendo Account12 1Nintendo Account 2 Nintendo Account31445 3435Nintendo Switch OnlineNintendo Switch 2 Nintendo Switch OnlineNintendo Switch 2Nintendo Switch OnlineNintendo Switch Online + Nintendo Switch 2202565Nintendo GameCube Nintendo ClassicsNintendo GameCube SOULCALIBUR IIF-ZERO GXNintendo Switch 2Nintendo GameCubeNintendo Switch 2 Nintendo Switch 2Nintendo Switch 2Nintendo Switch 2Nintendo Switch NintendoSwitch NintendoSwitch16NintendoSwitch 116mm 272mm13.9mmJoy-Con 2ZL/ZR30.7mm401gJoy-Con 2534g/7.9/1920x1080HDR /120HzCPU/GPUNVIDIA256GBUFSLANWi-Fi 6BluetoothTV3840 x 216060fps1920 x 1080 / 2560 x 1440120fpsHDR10TVHDMI Cable1920 x 1080PCM5.1TVHDMI CableUSBUSB Type-C 2Nintendo Switch 2

**Where can i download nintendo switch games for emulator. Nintendo switch emulator games for android free download. Download nintendo switch games for console and emulator - switch rom. Download nintendo switch emulator for pc. Nintendo switch games for emulator. Download nintendo switch games on pc. Nintendo switch emulator games download for android. Nintendo switch games for android emulator. Download nintendo switch games for skyline emulator. Nintendo switch games emulator for pc. Nintendo switch games download for egg ns emulator.**