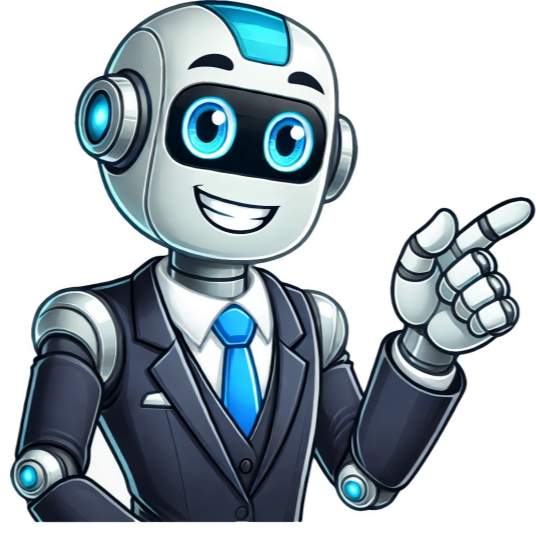


Continue



Examples with modal verbs

Modal verbs are special types of auxiliary verbs that help express various conditions such as possibility, ability, necessity, and permission. They often include words like can, may, might, could, should, would, will, and must. While less common ones like shall and ought are used in specific situations, others frequently utilized include can, may, might, could, should, would, will, and must. In past contexts, forms such as could, might, should, and would signified hypothetical or past scenarios. Modal verbs serve diverse purposes within sentences like questions (Could you help me?), suggestions (You should try the lasagna.), and habits (I would often walk to school.). Mastering modal verbs can be challenging but they become straightforward once one understands their usage. This guide explains everything needed to know about using modal verbs with ease. Modal verbs in English are used to express various nuances like probability, possibility, ability, permission, and obligation. They help create a sense of certainty or uncertainty around a situation. For instance, using "should" and "must" conveys a stronger level of expectation compared to "could", "may", or "might". In the context of ability, "can" is used to describe one's capabilities, while its negative form highlights limitations. When seeking permission, it's common to use modal verbs like "can", "may", or "could", often with a more formal tone reserved for "may". For example, "May I leave early today?" On the other hand, if you're asking someone else to perform an action, starting your question with "will", "would", "can", or "could" is appropriate. A suggestion typically involves using "should", as seen in phrases like "You should try the lasagna." For commanding actions, modal verbs such as "must", "have", and "need" are employed. These can also convey a sense of obligation or necessity, with their negative forms expressing the lack thereof. Habitual actions, whether past, present, or future, are often expressed using "would" for the past and "will" for both the present and future. Understanding how to use modal verbs correctly involves knowing when they appear in different tenses. In the simple present tense, for instance, modal verbs directly precede the main verb unless the sentence is a question, where their placement may vary. This includes dropping the infinitive form of "to" with most but not all modal verbs, as illustrated by saying someone can eat without including "to eat". I can eat a whole pizza, but you might need to say that because circumstances require it, so you would say "I have to eat a whole pizza." For yes/no questions, you use the infinitive form of the main verb with a different order: "[modal verb] + [subject] + [main verb infinitive]." Can you eat a whole pizza? Do you have to eat a whole pizza? Some modal verbs like "have" can be tricky because they act as both auxiliaries and main verbs. For questions, we use the auxiliary verb "do" in some cases. Most modal verbs deal with general situations or hypotheticals that haven't happened yet, so they usually refer to present and future time. However, some of them cannot refer to past time, except for a few core ones like "could," "might," "should," and "would." These core modal verbs can be used in the simple past tense with their past forms plus the infinitive form of the main verb. For example, "can" is used as "could" in the present, but "had to" when referring to the past. The other modal verbs do not change form for different tenses and are only used with different conjugations of a sentence's main verb to refer to present or future time. Modal Verbs Explained: A Guide to Possibility, Ability, Necessity, and More For simple past tense modal verbs, use could/would + [main verb infinitive]. For example, "I could do a handstand when I was a kid." During exam season in college, I would not sleep much. To form the present perfect with modal verbs like could, might, should, or would, use the present perfect form of the main verb, which is have plus the past participle. The formula for modal verbs in the present perfect tense is: could/might/should/would + have + [main verb past participle]. For instance, "I might have gone to the party, but I forgot." In contrast, when forming sentences about the future, main verbs like will are often used instead of a modal verb. For example, "They will be more likely to come over tomorrow if you give them plenty of warning." However, there are situations where using another modal verb makes sense. For instance, "Could I be majoring in law next year?" or "They should have left by the time we get there." Let's dive into the exciting world of modal verbs! These special auxiliary verbs modify the main verb, adding flavor to our sentences. They express various meanings like possibility, ability, permission, necessity, and more. Modal verbs always team up with regular verbs, changing their meaning from a simple fact. Common ones include Can, Could, May, Might, Must, Shall, Should, Will, and Would, each with its unique usage. For instance, "can" shows ability, while "may" hints at possibility, and "must" indicates necessity. These verbs also help create different tenses in English - think past conditional with "could" and future tense with "will." One key thing to remember: modal verbs don't have infinitive or participle forms; they stick to their base form and don't take -ing or -ed endings. In short, understanding modal verbs is crucial for effective communication in English. They express a range of meanings like ability, permission, possibility, obligation, and advice. Let's break it down further: - Ability: "can" and "could" tell if you're capable of something. - Examples: You can speak English fluently; I could run a marathon when I was younger. - Permission: "may" and "can" decide whether you're allowed to do something. - Examples: May I leave early today? Can I borrow your car for the weekend? - Possibility: "may," "might," "could," and "can" indicate how likely something is to happen. - Examples: It may rain later; The train might be delayed. - Obligation: "must" and "should" tell if you're required to do something. - Examples: You must submit your report by Friday. You should apologize for your mistake. - Advice: "should" and "ought to" give recommendations or suggestions. - Examples: You should exercise regularly; You ought to try the new restaurant in town. In summary, mastering modal verbs helps you communicate more effectively and accurately in English. They add depth and variety to our sentences, making them richer and more interesting. Modal Verbs in English Grammar - Understanding Their Usage and Meanings Modal verbs play a significant role in expressing various meanings such as ability, possibility, permission, and obligation in the English language. They can indicate that something is probable or possible, or not so. For example, "It is sunny today; it must be warm outside" can also be expressed as "It is sunny today; it is probably warm outside." Modal verbs are used to refer to skills and abilities, such as "He can cover a hundred metres in under ten seconds." They can indicate necessity or importance, and suggest what is advisable, like "You should say sorry." Modal verbs can also be used to ask for permission, give, or withhold it. For example, "Can I try my hand at it?" or "You may not enter the premises." Moreover, they are used to refer to habits and inclinations, such as "When I was a child, I would often climb trees." Modal verbs can differ in form and usage depending on the context. In statements, they are often used to express ability, possibility, permission, or obligation. For instance, "I can speak French fluently" or "It may rain tomorrow." They can also be used in questions to ask for permission, ability, or possibility. Examples include "May I leave the room now?" or "Can you swim?" In negative sentences, modal verbs can express the absence of ability, permission, or obligation. For example, "I cannot speak French fluently" or "You may not leave the room now." Understanding the meanings and usage of modal verbs is essential for effective communication in the English language. Their use can significantly impact the tone and meaning of a sentence, making them an important aspect of grammar to master. Modal verbs are a group of English grammar terms that provide additional information about the function of the main verb. They show possibility, intent, ability, or necessity and don't change their appearance. Some common examples include can, should, must, may, might, will, would, could, shall. Modal verbs express certainty, possibility, or impossibility and can be used to talk about ability, ask permission, make requests, and offers. Unlike regular verbs, modal verbs do not change their form to indicate different tenses, but they are used in their base form alongside the infinitive form of the main verb. They help create phrases that convey specific meanings, such as "can't help but" expressing an inability to stop doing something or "should have" expressing regret about a past action. Understanding modal verbs is crucial for effective English communication and can be improved by recognizing how they are used in statements, questions, and negative sentences. Regardless of how long ago something happened, modal verbs like "could" and "would" can be used to talk about the past. Here are some examples: "I could ride a bike when I was younger," or "He would always help me with my homework." When using modal verbs in the past, the main verb should be in its base form too, like in the sentence "I could have gone to the party, but I decided not to." Modal verbs can also be used in different tenses, such as present: "You should eat more vegetables," future: "We will have to leave early tomorrow," perfect: "He must have forgotten his phone at home," and continuous: "They might be playing tennis right now." Overall, modal verbs are useful tools that help us express ability, possibility, necessity, and permission in English. They include verbs like can, may, must, shall, will, could, might, should, and would.