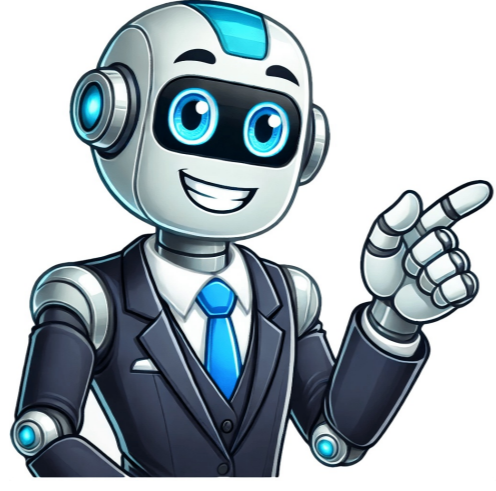


Continue



A drill and an impact driver are two separate tools with different functions, although they may look similar. A drill is a power tool that is designed to create a hole in a material. It typically has a chuck that holds a drill bit, which is rotated to create the hole. Drills come in different sizes and can be used for a variety of tasks, such as drilling holes in wood, metal, plastic, and other materials. An impact driver, on the other hand, is designed to drive screws and other fasteners into materials. It typically has a chuck that holds a screwdriver bit, which is used to turn the screw. Impact drivers come in different sizes and can be used for a variety of tasks, such as assembling furniture, installing cabinets, and hanging shelves. While both drills and impact drivers can be used for drilling holes, impact drivers are generally not as effective as drills for creating large holes or drilling through hard materials. Conversely, drills are generally not as effective as impact drivers for driving screws or other fasteners. When it comes to shopping for your yard, look no further than CRAFTSMAN® to find the right equipment for you. Browse cordless and gas tools at CRAFTSMAN®. Browse corded and cordless drills and drivers from CRAFTSMAN®, including super-duty reversible right-angle drills for tight spots at Craftsman. Your cart is empty. Shop Now Search by model number to locate your Product Warranty. To register and obtain additional warranty information for your CRAFTSMAN® products, create or log in to your CRAFTSMAN® Club account. This guide can help you locate your CRAFTSMAN® product model number. Scroll down to view more warranty details by category. To reach CRAFTSMAN® Customer Service, please chat with us, submit a form here, or give us a call at 888-331-4569 during operational hours, Monday to Sunday, 7 AM to 11 PM ET. Busque por número de modelo para encontrarla garantía de su producto. Para registrarse y obtener información adicional sobre la garantía de sus productos CRAFTSMAN®, cree o inicie sesión en su cuenta del Club CRAFTSMAN®. Esta guía puede ayudarle a localizar el número de modelo de su producto CRAFTSMAN®. Desplácese hacia abajo para ver más detalles de la garantía por categoría. Para comunicarse con el Servicio de atención al cliente de CRAFTSMAN®, chatee con nosotros, envíe un formulario aquí o llámenos al +52 18008472312. Browse high-performance power tools and accessories, including drivers, impacts, saws and more. Get the best quality for the job from Craftsman. *20V MAX battery, maximum initial battery voltage (measured without a workload) is 20 volts. Nominal voltage is 18. **Rated among 25 leading competitive brands, based on online national survey of 261 DIY tool and residential outdoor power equipment owners ages 18+, conducted in 10/2024 Stay up to date with all the newest CRAFTSMAN® products. From cordless power tools and outdoor products to the latest hand tools, CRAFTSMAN® is here to help you crush your to-do list. Skip to main content close Find out more information about CRAFTSMAN® tools, warranty, parts, service, and more. Experience lighter, quieter, emission-free power with the V20® System—compatible with over 100 CRAFTSMAN® products for the backyard and beyond. BRUSHLESS RP™ Where runtime meets performance. Explore the V20® BRUSHLESS RP™ line for the most demanding applications. I'M LOOKING FOR: I'M LOOKING FOR: I'M LOOKING FOR: V20® OUTDOOR RIDING MOWERS WALK-BEHIND MOWERS CHAINSAWS PRESSURE WASHERS LOOKING FOR MOWER PARTS? BENEFITS OF JOINING Register your products, view warranty, create your custom wishlist, be the first to know about new products and deals, and join the CRAFTSMAN® community. *20V MAX battery, maximum initial battery voltage (measured without a workload) is 20 volts. Nominal voltage is 18.